



**FROM CLASS
TO CAREER**

VIEW BOOK

2024–2025



**NORQUEST
COLLEGE**

LAND ACKNOWLEDGMENT

We would like to begin by acknowledging that we are on the traditional lands referred to as Treaty 6 Territory and the homeland of Métis Nation of Alberta. This land is home to many diverse groups of Indigenous peoples including the Cree, Dene, Blackfoot, Saulteaux, Nakota Sioux, Métis, and Inuit. We also acknowledge that the City of Edmonton and all the people here are beneficiaries of Indigenous land which encompasses the traditional territories of numerous western Canadian First Nations as well as the Métis people who have called these lands home since time immemorial.

NorQuest acknowledges the treaty, the Métis Nation of Alberta, the land and the territories of Indigenous peoples as a reminder of:

- Our responsibility and obligations to the land and to Indigenous peoples,
- Our accountability to addressing the ongoing impacts of colonization that are distinct to Indigenous peoples and communities,
- Our work together in remembering the spirit and intent of the Treaty towards right relations.



TABLE OF CONTENTS

ABOUT NORQUEST

- 3 Welcome to NorQuest
- 6 Clubs and Associations
- 7 Student Services
- 8 Indigenous Student Services
- 9 Journeys Through Education

PROGRAMS

ARTS AND SCIENCES

- 11 Arts and Sciences
- 11 Energy Management
- 12 Environmental Technician
- 12 Machine Learning Analyst

BUSINESS

- 13 Accounting Technician
- 13 Administrative Professional
- 14 Business Administration
- 14 Dental Office Assistant
- 15 Hospital Unit Clerk
- 15 Medical Office Assistant
- 16 Veterinary Office Assistant

COMMUNITY STUDIES

- 17 Addictions Recovery Practitioner
- 17 Autism Spectrum Disorder Studies
- 18 Behaviour and Regulation Studies
- 18 Child and Youth Care
- 19 Community Support Worker
- 19 Disability Studies
- 20 Early Learning and Child Care
- 20 Educational Assistant
- 21 Indigenous Studies
- 21 Justice
- 22 Mental Health Recovery Practitioner
- 22 Settlement Studies
- 23 Social Work

HEALTH

- 23 Advanced Education in Orthopaedics for LPNs
- 24 Advanced Foot Care
- 24 Health Care Aide
- 25 Health Care Leadership
- 25 Interdisciplinary Therapy Assistant
- 26 Medical Device Reprocessing Technician
- 26 Pharmacy Technician
- 27 Practical Nurse
- 28 Practical Nurse Diploma for Internationally Educated Nurses
- 28 Therapeutic Recreation

ACADEMIC UPGRADING

- 30 Academic Upgrading
- 30 Foundations for Learning

EMPLOYMENT PREPARATION

- 30 Apprenticeship Prep
- 30 Day Home Provider
- 31 Transitions to Employment

ENGLISH LANGUAGE TRAINING

- 31 ESL Intensive
- 32 Language Instruction for Newcomers to Canada (LINC)
- 32 Teaching English as a Second Language

CONTINUING EDUCATION

- 33 Supply Chain
- 33 Business Analysis
- 34 Food and Beverage Management
- 34 Flight Attendant
- 35 Insurance Professional
- 35 Managerial Excellence

- 37 English Language Proficiency
- 39 Funding Your Education
- 40 How to Apply
- 41 NorQuest Alumni Network
- 42 Academic Schedule



WELCOME TO NORQUEST COLLEGE

Explore over 60 programs and take the first step towards a career you'll love.

"I was hired within less than a week of finishing my final courses."

- Shanna Omeasoo, Child and Youth Care graduate



"I was looking for a career, not a job. And that's how I landed at NorQuest."

- Robert Bradley, Business Administration

YOUR COMMUNITY COLLEGE

As Alberta's largest community college, NorQuest offers a wide range of accredited diploma and certificate programs that train students for specific careers.

NorQuest works closely with industry partners and government representatives to design programs that meet industry demand. Students can enter careers full of opportunity and contribute to a prosperous community and economy.

"Each program at NorQuest has an industry program advisory committee to ensure that our programs are workforce relevant. The advice and support of these community business leaders helps ensure our graduates continue to be highly coveted contributors to Alberta's economy."

- Carolyn Campbell, President & CEO of NorQuest College



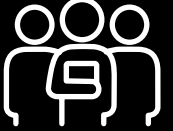
Graduate with real-world experience



Study options include online, in person, or hyflex



Instructors with real-world experience



Support services to help students achieve their goals



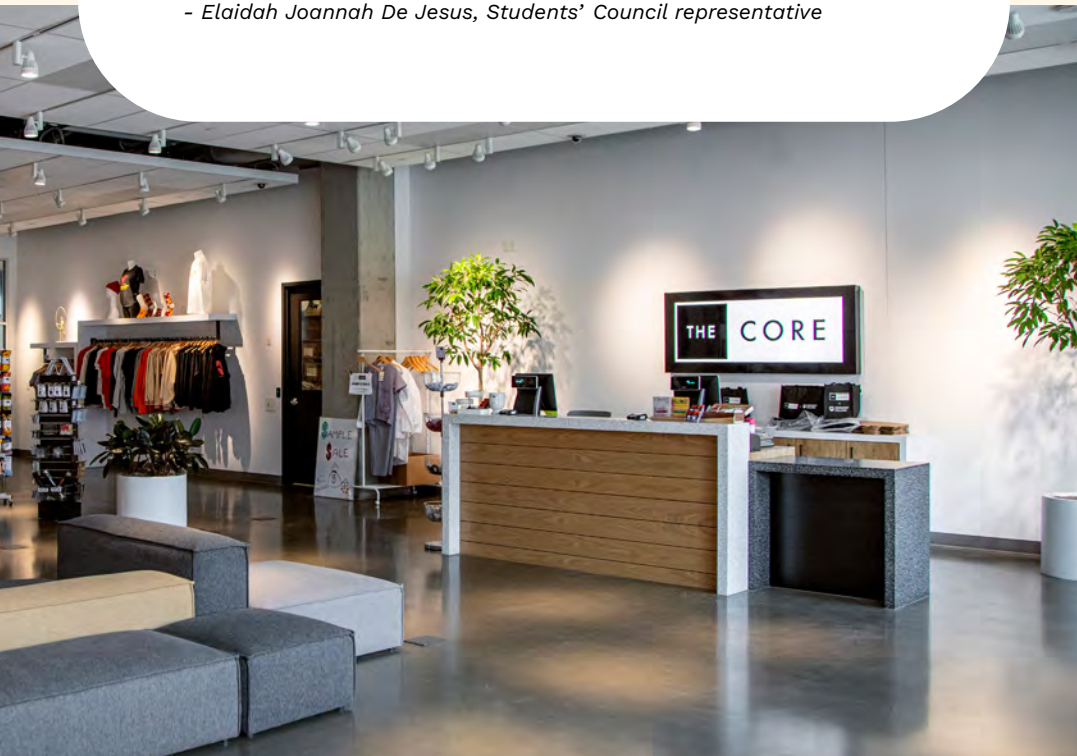
Streamlined programming with direct career paths

YOUR CAMPUS COMMUNITY

NorQuest creates an uplifting and welcoming campus community—a place where you can feel inspired, encouraged, and supported as you learn and grow.

“There are many ways to be a part of the community at NorQuest. Whether through volunteering, joining a student club, or taking on a leadership role on campus, being involved can lead to a sense of belonging with others and build friendships that will last long after you’ve graduated.”

- Elaidah Joannah De Jesus, Students’ Council representative



The Core

The Core at NorQuest provides educational essentials and branded apparel for students. From textbooks to sweatshirts to course supplies, students can purchase items for their classroom or their closet.

The Core also provides discounts on technology through the ACADME program. Students can receive exclusive discounts on desktop computers, monitors, keyboards, headsets, and computer accessories.



16,000+

Full-time and part-time students in credit and non-credit programs



100+

Countries of birth



75+

First languages spoken on campus

FIND YOUR COMMUNITY

NorQuest offers a variety of clubs, associations, and ways to get involved.

“I wanted to come to NorQuest because of the inclusivity and diversity I saw. There were so many people from so many different countries coming together to learn, and everyone seemed valued.”

- Binita Khadka, Disability Studies graduate



Esports

Meet new people, make new friends, and experience a new side to college life. Esports is open to everyone - regardless of your skillset or experience in gaming. Join a varsity team and compete against others across Canada!

Pride

The Pride Committee at NorQuest helps ensure that 2SLGBTQIA+ students and employees feel safe, respected, included, and celebrated for who they are.

NorQuest’s Networking Café

Get matched with a mentor that can help you achieve your career and personal goals.

RBC Student Ambassadors

As an RBC Student Ambassador, you can support NorQuest events and activities throughout the college while sharing your passion for education and meeting new people.

SANQC

The Students’ Association of NorQuest College strives to make your NorQuest experience the best it can be. Join the Student Council, start a club, or take part in fun events!

English Speaking Club

This club can help students increase their confidence and improve their English language communication skills.

Peer Mentorship Program

New international students interested in participating in the program are matched with a peer mentor. Throughout each term, peer mentors offer social support, assistance, and guidance while developing their leadership skills.



STUDENT SERVICES

NorQuest strives to ensure that each student feels supported as they start and complete their educational journey.

“Career Coaches provide valuable support and guidance to empower NorQuest learners and graduates at all stages of their career journey. I love creating connections with learners as we work together to explore their interests and set individualized goals, all while building their confidence and workforce-relevant skills.”

- Anju Symington, Career Coach

Health and wellness support

A team of social workers, nurses, and psychologists provide free health and wellness support for students. Learners can also register for free workshops on mental health, time management, grief and loss, test anxiety, and more.

Student advising

Student Advisors are your central point of contact after you apply for your program. They provide information on programs, services, testing, and financial aid.

Tutoring

Students in all programs can receive free tutoring by professional tutors that can assist with homework, understanding assignments, clarifying course content, and preparing for exams.

Accessibility

Support services are available to students with an experience of disability including assistive technology, academic coaching, accommodated exams, and sign language interpretation.

Career support

The Career Centre helps students prepare for their future careers by empowering students through real-world experiences, connections to industry, and professional skills development. Learners can also access the student job board on CareerQuest hub.

Child care centre

The Intercultural Child & Family Centre provides childcare for children between one and six years old. Our program is play based, encouraging children’s creativity and learning through hands-on discovery in a responsive and stimulating environment.

International Student Services

NorQuest offers various support programs and services to meet the unique needs of international students including international student advising, settlement guidance, and information on immigration-related matters.

Campus SafeWalk

The Campus SafeWalk program is available to all NorQuest students. Campus SafeWalkers will accompany students to their vehicles or transit stations, so they can have peace of mind as they leave campus.

THE MIYO-PIMÂTISIWIN CENTRE

Miyo-pimâtisiwin means to “live a good life” in Cree and is a multi-purpose facility for Indigenous students and the college community. Students and staff can gather together to learn more about Indigenous ways of knowing and beliefs.

“It is impactful having a safe space where tutors meet one on one with students. There aren’t many places you can smudge indoors, but the Miyo-pimâtisiwin Centre allows this. This was helpful in calming my anxiety before tests and exams and helped to center me.”

- Rob Gurney, Social Work Graduate and President’s Medal Recipient

Waived application and tuition deposit fees

During the application process, Indigenous students do not need to pay the application fee or tuition deposit.

Indigenous Legacy Access Bursary

This bursary provides funding for eligible Indigenous students enrolled in Open Admissions Pathways for a Business or Community Studies program. Students will receive funding for the full value of courses they take in a single academic year.

Indigenous student advisors

NorQuest has a friendly and knowledgeable team of Indigenous Student Advisors who can help you navigate your academic journey with a holistic approach, including academic, cultural social and physical considerations.

Completion ceremony

When Indigenous students graduate from their NorQuest program, they can celebrate with their family, friends, and elders in a way that honours their ancestors and commemorates their traditions.

Non-Indigenous learners are also welcomed at the Centre and can learn more about Indigenous teachings and traditions by:

- Learning how to smudge and engaging in smudging ceremonies
- Touring the Centre and asking staff for guidance on Indigenous teachings
- Being invited to cultural ceremonies and events when appropriate

If non-Indigenous students are looking for a quiet area to study with Indigenous peers, they are welcome to come into the Centre during operational hours.

JOURNEYS THROUGH EDUCATION

Post secondary isn't a one-size-fits-all experience. NorQuest has a journey—or pathway—that allows each student to have an enriching academic experience while preparing them for further studies.

Open Admissions Pathways

Don't wait to start your academic journey. Through NorQuest's Open Admissions Pathways, students can gain admission into select programs even if they don't meet the admission requirements. Students will start their journey through Open Studies and earn credits towards their program.

Available programs:

- Business
 - o Accounting Technician (certificate)
 - o Administrative Professional (certificate)
 - o Business Administration (diploma)
- Community Studies
 - o Community Support Worker (certificate)
 - o Early Learning and Child Care (diploma or certificate)
 - o Disability Studies (diploma)
 - o Indigenous Studies (diploma)
 - o Justice (diploma)

Learn more at norquest.ca/pathway

Open Studies

Open Studies is available for students who wish to take post-secondary-level credit courses at NorQuest but are not applying to a specific certificate or diploma program to attain a credential. Open Studies is ideal for students who:

- Aren't sure which program to take and would like to complete some courses to see what they're most interested in pursuing.
- Have a general interest in taking classes for professional or personal development.
- Are visiting from another post-secondary institution and wish to take a course at NorQuest because it fits within their schedule and/or the course isn't offered now by their home institution.

Learn more at norquest.ca/openstudies

Academic Upgrading

NorQuest College operates as an accredited high school and offers courses that follow the Alberta Education curriculum. These courses prepare students to continue their studies at NorQuest or other post-secondary institutions in Alberta and across Canada.

Students can choose to upgrade only the courses they need for post-secondary entrance, or they can earn a high school diploma or general education diploma (GED).

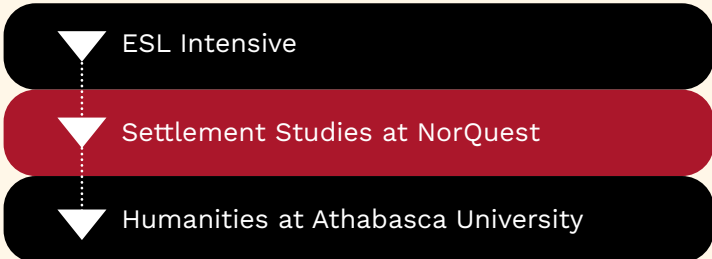
Learn about course availability at norquest.ca/au

Laddering Opportunities

Success isn't always a straight line with a single start point and a single end point. Most times, success is like a ladder with each rung representing a step in your journey.

At NorQuest, we create laddering opportunities for students, so they can make continuous progress towards their goals.

From the NorQuest classroom to Athabasca University



"I play a big role in making sure that newcomers in our communities are assisted and given tools to reach their potential. As an advocate, I have kept on increasing my professional growth by continuous learning, and I want to keep passing those skills to others so that we can move ahead together."

- Bazibuhe (Bazi) Muhabwa

WHAT DOES SUCCESS LOOK LIKE FOR YOU?

At NorQuest, you can define what success looks like for your educational and personal journey.

Some students come to NorQuest to prepare for a post-secondary program while others come with a specific career goal in mind. Whatever your journey looks like, NorQuest provides the space where you can learn, grow, and find your path.

"Now that I have my diploma, I know it will lead me to success no matter where it takes me."

- Rod Anderson, laddering student from Arts and Sciences to Indigenous Studies



President's Medal Winner 2023 Robert Gurney

Rob knows a thing or two about responsibility and doing more. He first attended NorQuest in 1997 to upgrade his high school qualifications.

Rob chose NorQuest for its central location and because he had a friend who shared their happy experience studying social work at the college. Many years later, social work drew Rob back to NorQuest. He is now graduated with a social work diploma and is also the recipient of the President's Medal, NorQuest's top student academic achievement.

Besides his studies at NorQuest, Rob contributed to campus life by volunteering for college events, participated in the Students' Association, and was part of the Student Judicial Affairs Committee. Rob also received the RBC Mentorship Scholarship for his work as a student ambassador and tutor.

"I am greatly honoured to receive the President's Medal. The work has never been for accolades but gives me purpose. It holds a certain responsibility to take this and use it to do more and build NorQuest's reputation. It doesn't end here."

Rob is modest and sums up his accomplishments simply. "Giving feeds your medicine wheel," he says with a smile. "To help others gives back in its own way. It's healing to help others heal."

ARTS AND SCIENCES

ARTS AND SCIENCES

norquest.ca/arts
CREDENTIAL: Diploma

Are you interested in pursuing a Bachelor of Arts or Bachelor of Sciences degree, but you're struggling to gain entry into university—or you're overwhelmed by large class sizes? Through NorQuest's two-year Arts and Sciences program, you can start your post-secondary experience in an inclusive, welcoming environment while gaining 60 transferable credits.

Student Advisors will help you design your own program of study and build an academic plan that will help you achieve your goals.

Note: Courses can be taken individually for university transfer through Open Studies.

ADMISSION REQUIREMENTS

- Language Arts (one of or equivalent)
 - 65% in English Language Arts 30-1
 - 75% in English Language Arts 30-2
 - 65% in ESLG 1860
 - 75% in ESLG 1898
- ELP Requirements¹
 - Band F - see pages 37-38 for details.

ENERGY MANAGEMENT

norquest.ca/energy
CREDENTIAL: Diploma

Put a spark in your career with the new interdisciplinary Energy Management program and gain the skills and knowledge required for growing workforce needs in the energy sector. You will learn to apply emerging renewable energy sources, understand energy efficiency, and navigate energy policy so that you can support and direct the energy needs of organizations and communities.

CAREER POTENTIAL

Graduates will find employment at the technology level in various settings such as electrical utility companies, government, consulting firms, oil and gas, and facilities management and can pursue many different careers as energy managers, advisors, analysts, and consultants.

ADMISSION REQUIREMENTS

- Language Arts (one of or equivalent)
 - 60% in English Language Arts 30-1
 - 60% in ESLG 1860
- 50% in Mathematics 30-1 or equivalent
- ELP Requirements¹
 - Band F – see pages 37-38 for details.

Practicum/work experience requirements may apply. See program website for complete details.²

ENVIRONMENTAL TECHNICIAN

norquest.ca/ept
CREDENTIAL: Diploma

Are you passionate about the environment? Start a rewarding career to protect and sustain the health of our environment and ecosystems. Through extensive, hands-on training in both laboratory and field settings, you will prepare for technical work in the environmental sector and gain practical knowledge and skills in compliance auditing and contaminated site management to impact assessment and pollution prevention and monitoring.

CAREER POTENTIAL

Graduates may find employment with consulting firms, government, and industry. Many will enter the workforce as environmental technicians/technologists or environmental scientists, become self-employed, or choose to pursue a bachelor's degree.

ADMISSION REQUIREMENTS

- Language Arts (one of or equivalent)
 - 50% in English Language Arts 30-1
 - 60% in English Language Arts 30-2
 - 50% in ESLG 1860
 - 60% in ESLG 1898
- 50% in Mathematics 30-2 or equivalent
- 50% in Biology 30 or equivalent
- ELP Requirements¹
 - Band F - see pages 37-38 for details.

Applicants who have previously completed a Bachelor of Science, Technology, or Engineering degree will be considered to have met the academic admission requirements as long as the English Language Arts requirement is met.

Practicum/work experience requirements may apply. See program website for complete details.²

MACHINE LEARNING ANALYST

norquest.ca/mla
CREDENTIAL: Diploma

Do you enjoy solving puzzles? Enter the exciting field of artificial intelligence (AI) and machine learning (ML) with NorQuest's new Machine Learning Analyst program. The first of its kind in Canada, the program delivers flexible, career-ready training that will prepare you for entry-level jobs in the growing and globally competitive field of computer science. You will develop fundamental skills in AI and ML, such as data analytics and computer programming, and build foundational business skills that will equip you to work in multi-disciplinary teams that develop exciting solutions for variety of business problems in different industries.

This program will prepare you for AI-related careers using real-world ML problems with input from local businesses, while also developing a strong project portfolio to prepare for employment.

CAREER POTENTIAL

Machine learning and data analytics are tools that are used by almost all businesses and sectors to transform data into functional business solutions, and graduates will be prepared to follow many different careers paths including ML analyst or technician and data analyst or scientist.

ADMISSION REQUIREMENTS

- Language Arts (one of or equivalent)
 - 60% in English Language Arts 30-1
 - 60% in ESLG 1860
 - 70% in English Language Arts 30-2
 - 70% in ESLG 1898
- Mathematics (one of or equivalent)
 - 50% in Mathematics 30-1
 - 50% in Mathematics 30-2
- ELP Requirements¹
 - Band F– see pages 37-38 for details.

Practicum/work experience requirements may apply. See program website for complete details.²



BUSINESS

ACCOUNTING TECHNICIAN

norquest.ca/at
CREDENTIAL: Certificate

Essential across all industries, accounting professionals play a key role in organizational success. This program provides the basic theory and technical skills required to perform a range of accounting services.

Note: This is a Bring Your Own Device program; a computer with Windows, Microsoft Office 2016, and a stable Internet connection are required.

CAREER POTENTIAL

Graduates find employment in small business, government, banking, insurance, manufacturing, health services, not-for-profit organizations, retail, hospitality, oilfield, construction, and other industries.

ADMISSION REQUIREMENTS

- Language Arts (one of or equivalent)
 - 50% in English Language Arts 30-1
 - 50% in English Language Arts 30-2
 - 50% in ESLG 1860
 - 50% in ESLG 1898
- Mathematics (one of or equivalent)
 - 65% in Mathematics 20-1
 - 65% in Mathematics 20-2
 - 50% in Mathematics 30-1
 - 50% in Mathematics 30-2
- ELP Requirements¹
 - Band E - see pages 37-38 for details.

Missing requirements? The Open Admissions Pathways provides an alternative way for you to start your studies quickly and enter your program. Learn more at norquest.ca/pathway.

Practicum/work experience requirements may apply. See program website for complete details.²

ADMINISTRATIVE PROFESSIONAL

norquest.ca/adminpro
CREDENTIAL: Certificate

The Administrative Professional program equips you with the skills and knowledge you need to become an office professional in today's business environment. You will learn essential office skills such as basic accounting, software applications, event management, and business communication.

NorQuest is now a certified Educational Partner with the Association of Administrative Professionals (AAP). Students who complete the required courses can work towards earning their Canadian Certified Administrative Professional (CCAP) designation.

Note: This is a Bring Your Own Device program; a computer with Windows, Microsoft Office 2016, and a stable Internet connection are required.

CAREER POTENTIAL

Graduates find employment in the public and private sectors, working in rapidly evolving administrative support roles that include office coordination, communications, customer service, data analysis, and event planning.

ADMISSION REQUIREMENTS

- Language Arts (one of or equivalent)
 - 50% in English Language Arts 30-1
 - 50% in English Language Arts 30-2
 - 50% in ESLG 1860
 - 50% in ESLG 1898
- Mathematics (one of or equivalent)
 - 50% in Mathematics 10C
 - 50% in Mathematics 20-3
- ELP Requirements¹
 - Band E - see pages 37-38 for details.

Missing requirements? The Open Admissions Pathways provides an alternative way for you to start your studies quickly and enter your program. Learn more at norquest.ca/pathway.

Practicum/work experience requirements may apply. See program website for complete details.²

BUSINESS ADMINISTRATION

norquest.ca/ba
CREDENTIAL: Diploma

Build the skills you need to thrive in a dynamic business world and choose from five specializations in the second year—Management (entrepreneurship or business operations), Accounting, Human Resources Management, Finance, or General Studies—in which you will develop a core understanding of business fundamentals for any career you choose.

Note: This is a Bring Your Own Device program; a computer with Windows, Microsoft Office 2016, and a stable Internet connection are required.

CAREER POTENTIAL

Graduates find employment in the public and private sectors, small business, government, banking, insurance, not-for-profit organizations, retail, hospitality, oilfield, construction, and other industries.

ADMISSION REQUIREMENTS

- Language Arts (one of or equivalent)
 - 50% in English Language Arts 30-1
 - 50% in English Language Arts 30-2
 - 50% in ESLG 1860
 - 50% in ESLG 1898
- Mathematics (one of or equivalent)
 - 65% in Mathematics 20-1
 - 65% in Mathematics 20-2
 - 50% in Mathematics 30-1
 - 50% in Mathematics 30-2
- ELP Requirements¹
 - Band E - see pages 37-38 for details.

Missing requirements? The Open Admissions Pathways provides an alternative way for you to start your studies quickly and enter your program. Learn more at norquest.ca/pathway.

Practicum/work experience requirements may apply. See program website for complete details.²

DENTAL OFFICE ASSISTANT

norquest.ca/dental
CREDENTIAL: Certificate

Provide essential administrative support to dental care professionals and patients. In this condensed, intensive program you will learn about dental terminology, office procedures, computer software, and communication strategies for working with a diverse community of clients.

Note: This is a Bring Your Own Device program; a computer with Windows, Microsoft Office 2016, and a stable Internet connection are required.

CAREER POTENTIAL

Graduates may find employment in general and specialty dental practices such as denture clinics, orthodontist offices, dental labs, and other dental-related businesses and health-care industries.

ADMISSION REQUIREMENTS

- Language Arts (one of or equivalent)
 - 50% in English Language Arts 30-1
 - 65% in English Language Arts 30-2
 - 50% in ESLG 1860
 - 65% in ESLG 1898
- Mathematics (one of or equivalent)
 - 65% in MATH 1905
 - 50% in Mathematics 10-3
- ELP Requirements¹
 - Band F - see pages 37-38 for details.

Practicum/work experience requirements may apply. See program website for complete details.²



HOSPITAL UNIT CLERK

norquest.ca/huc
CREDENTIAL: Certificate

Hospital unit clerks are the first point of contact for patients and play a vital role in managing communication and information in hospital nursing units. Learn medical terminology, how to process medical orders, communication skills, administrative procedures, and computer skills.

Note: This is a Bring Your Own Device program; a computer with Windows, Microsoft Office 2016, and a stable Internet connection are required.

CAREER POTENTIAL

Graduates may work in acute care and rehabilitation hospitals and extended care and long-term facilities.

ADMISSION REQUIREMENTS

- Language Arts (one of or equivalent)
 - o 50% in English Language Arts 30-1
 - o 65% in English Language Arts 30-2
 - o 50% in ESLG 1860
 - o 65% in ESLG 1898
- Mathematics (one of or equivalent)
 - o 65% in MATH 1905
 - o 50% in Mathematics 10-3
- ELP Requirements¹
 - o Band F - see pages 37-38 for details.

Practicum/work experience requirements may apply. See program website for complete details.²

MEDICAL OFFICE ASSISTANT

norquest.ca/moa
CREDENTIAL: Certificate

Considered an asset to health-care teams, medical office assistants support physicians and other health-care professionals with essential administrative support.

NorQuest's Medical Office Assistant program helps you get into the workforce quickly and develop skills to perform a variety of tasks including scheduling, billing, and communications, in addition to using current office technology and software.

Note: This is a Bring Your Own Device program; a computer with Windows, Microsoft Office 2016, and a stable Internet connection are required.

CAREER POTENTIAL

Graduates find work in medical offices, physical therapy clinics, diagnostic imaging labs, hospitals, and community health centres.

ADMISSION REQUIREMENTS

- Language Arts (one of or equivalent)
 - o 50% in English Language Arts 30-1
 - o 65% in English Language Arts 30-2
 - o 50% in ESLG 1860
 - o 65% in ESLG 1898
- Mathematics (one of or equivalent)
 - o 65% in MATH 1905
 - o 50% in Mathematics 10-3
- ELP Requirements¹
 - o Band F - see pages 37-38 for details.

Practicum/work experience requirements may apply. See program website for complete details.²

VETERINARY OFFICE ASSISTANT

norquest.ca/voa
CREDENTIAL: Certificate

As a valued member of the team in a clinical, emergency, or specialty hospital setting, veterinary office assistants support practices with essential administrative skills. Enter the workforce quickly and develop skills in client care, communications, veterinary terminology, veterinary computer software, animal handling, and more.

Note: This is a Bring Your Own Device program; a computer with Windows, Microsoft Office 2016, and a stable Internet connection are required.

CAREER POTENTIAL

Graduates have opportunities to work in veterinary practices and clinics, animal hospitals, related not-for-profit organizations, and veterinary supply companies.

ADMISSION REQUIREMENTS

- Language Arts (one of or equivalent)
 - o 50% in English Language Arts 30-1
 - o 65% in English Language Arts 30-2
 - o 50% in ESLG 1860
 - o 65% in ESLG 1898
- Mathematics (one of or equivalent)
 - o 65% in MATH 1905
 - o 50% in Mathematics 10-3
- ELP Requirements¹
 - o Band F - see pages 37-38 for details.

Practicum/work experience requirements may apply. See program website for complete details.²



COMMUNITY STUDIES

ADDICTIONS RECOVERY PRACTITIONER

norquest.ca/arp

CREDENTIAL: Post-Diploma Certificate

This post-diploma certificate builds upon students' previous training and experience and provides health and human services professionals with the knowledge and skills to work with clients experiencing substance use and concurrent disorders.

CAREER POTENTIAL

Graduates may enter the field of addictions recovery or pursue further education at the bachelor's and master's levels in areas such as social work, addictions, mental health, program administration, management, and research. Graduates may receive credit toward NorQuest's Mental Health Recovery Practitioner program.

ADMISSION REQUIREMENTS

- Post-secondary diploma or degree in health, human services, or social sciences; or active licensure in Canada with a health or human services governing body
- ELP Requirements¹
 - o Band F - see pages 37-38 for details.

Practicum/work experience requirements may apply. See program website for complete details.²

AUTISM SPECTRUM DISORDER STUDIES

norquest.ca/asds

CREDENTIAL: Post-Diploma Certificate

The program approaches supporting those on the autism spectrum through a strength-based approach, looking at their experiences in meaningful ways.

CAREER POTENTIAL

Graduates may work in a variety of settings, such as early intervention programs, school settings, and community agencies as well as directly in individual's homes.

ADMISSION REQUIREMENTS

- Completion of a relevant diploma program or degree in healthcare, education, early learning, and wellness fields
- ELP Requirements¹
 - o Band F - see pages 37-38 for details.

BEHAVIOUR AND REGULATION STUDIES

norquest.ca/brs

CREDENTIAL: Post-Diploma Certificate

This part-time, online program is designed for diploma graduates and working professionals in community, educational, and health settings who would like to enhance their knowledge and build competencies and skills in working with individuals who display behaviours of concern.

CAREER POTENTIAL

Graduates may work in a variety of settings, such as early intervention programs, school settings, and community agencies as well as directly in individual's homes.

ADMISSION REQUIREMENTS

- Completion of a relevant diploma program or degree in healthcare, education, early learning, and wellness fields
- ELP Requirements¹
 - o Band F - see pages 37-38 for details.

CHILD AND YOUTH CARE

norquest.ca/cyc

CREDENTIAL: Diploma

Learn to support children and youth who have experienced social, behavioural, and emotional challenges in navigating lived experiences, including those at risk with family processes, access and success in education, physical and mental health, and addictions. Explore the impact on youth and families, the importance and strength of diversity and difference, and developing professional practice.

CAREER POTENTIAL

Graduates find employment in the non-profit sectors for child and youth care services, and various departments within municipal and provincial governments including group homes, schools, hospitals, emergency shelters, and corrections.

ADMISSION REQUIREMENTS

- Language Arts (one of or equivalent)
 - o 60% in English Language Arts 30-1
 - o 60% in English Language Arts 30-2
 - o 60% in ESLG 1860
 - o 60% in ESLG 1898
- ELP Requirements¹
 - o Band F - see pages 37-38 for details.

Practicum/work experience requirements may apply. See program website for complete details.²



COMMUNITY SUPPORT WORKER

norquest.ca/csw
CREDENTIAL: Certificate

This exciting certificate program provides you with the knowledge and skills to work with marginalized communities and individuals at the front line in a human service delivery setting.

CAREER POTENTIAL

Graduates may receive direct entry into year two of the Settlement Studies program or credit toward the Disability Studies program. Graduates find employment in immigrant settlement agencies, Indigenous child and family service agencies, group homes, ethno-specific community service organizations, and emergency shelters.

ADMISSION REQUIREMENTS

- Language Arts (one of or equivalent)
 - o 60% in English Language Arts 30-1
 - o 60% in English Language Arts 30-2
 - o 60% in ESLG 1860
 - o 60% in ESLG 1898
- ELP Requirements¹
 - o Band F - see pages 37-38 for details.

Missing requirements? The Open Admissions Pathways provides an alternative way for you to start your studies quickly and enter your program. Learn more at norquest.ca/pathway.

Practicum/work experience requirements may apply. See program website for complete details.²

DISABILITY STUDIES

norquest.ca/ds
CREDENTIAL: Diploma

Acquire the skills needed to support individuals with disabilities in early intervention, community settings, schools, recreation, and employment. You will be prepared to create, implement, assess, and modify plans to help utilize individual strengths and abilities to increase opportunities for meaningful participation in the community.

CAREER POTENTIAL

Graduates will find employment in a number of careers in the community disability sector. This may involve working for an agency or with a family directly to assist individuals who receive assistance through programs such as Family Support for Children with Disabilities or Persons with Developmental Disabilities.

ADMISSION REQUIREMENTS

- Language Arts (one of or equivalent)
 - o 60% in English Language Arts 30-1
 - o 60% in English Language Arts 30-2
 - o 60% in ESLG 1860
 - o 60% in ESLG 1898
- ELP Requirements¹
 - o Band F - see pages 37-38 for details.

Missing requirements? The Open Admissions Pathways provides an alternative way for you to start your studies quickly and enter your program. Learn more at norquest.ca/pathway.

Practicum/work experience requirements may apply. See program website for complete details.²

EARLY LEARNING AND CHILD CARE

norquest.ca/elcc
CREDENTIALS: Certificate or Diploma

Learn to provide quality child care in a variety of settings and plan appropriate activities for children. Knowledge of child development, family dynamics, play, and program planning will equip you to support the healthy development of children through child-centred learning experiences. The certificate program prepares graduates for Early Childhood Educator II certification and the diploma program prepares graduates for Early Childhood Educator III certification from Alberta Children's Services.

CAREER POTENTIAL

Graduates may find employment in daycares, day homes, and other programs. The child-care field is an above-average growth profession with an increasing demand for employees.

ADMISSION REQUIREMENTS

- Certificate, Diploma
- Language Arts (one of or equivalent)
 - o 60% in English Language Arts 30-1
 - o 60% in English Language Arts 30-2
 - o 60% in ESLG 1860
 - o 60% in ESLG 1898
 - ELP Requirements¹
 - o Band F - see pages 37-38 for details.

Diploma-Year 2 only

- NorQuest College Early Learning and Child Care certificate or equivalent

Missing requirements? The Open Admission Pathways provides an alternative way for you to start your studies quickly and enter your program. Learn more at norquest.ca/pathway.

Practicum/work experience requirements may apply. See program website for complete details.²

EDUCATIONAL ASSISTANT

norquest.ca/ea
CREDENTIAL: Certificate

Learn to support children and youth with diverse learning needs and help them to reach their potential. With a focus on diversity and inclusion and hands-on classroom learning, the Educational Assistant program prepares you to play a key role in helping students thrive in a variety of educational and community settings. Acquire knowledge and interpersonal and practical skills to support students both one-on-one and in small groups.

CAREER POTENTIAL

Graduates may work in public, separate, or private schools, in pre-kinder and early intervention programs, before and after school programs, respite care for children with special needs, summer camps and programs for children with special needs, community organizations, hospitals, or young offender centres. Graduates may choose to continue into the Disability Studies or Early Learning and Child Care diploma programs at NorQuest.

ADMISSION REQUIREMENTS

- Language Arts (one of or equivalent)
 - o 60% in English Language Arts 30-1
 - o 60% in English Language Arts 30-2
 - o 60% in ESLG 1860
 - o 60% in ESLG 1898
- ELP Requirements¹
 - o Band F - see pages 37-38 for details.

Practicum/work experience requirements may apply. See program website for complete details.²



INDIGENOUS STUDIES

norquest.ca/is
CREDENTIAL: Diploma

Broaden your understanding of the cultural, historical, social, and political experiences of Indigenous Peoples in Canada and pursue a career or further education with NorQuest's new Indigenous Studies program.

Designed for Indigenous and non-Indigenous learners, the program will focus first on Treaty 6, and then on Treaties 7 and 8, as well as other Treaties across Canada and on global Indigenous perspectives.

CAREER POTENTIAL

Graduates may pursue a career in Indigenous relations, governance, education, and culture. Employment opportunities may be found within Indigenous governments and administrations, as well as with federal, provincial, and municipal governments and non-profit organizations.

ADMISSION REQUIREMENTS

- Language Arts (one of or equivalent)
 - o 50% in English Language Arts 30-1
 - o 60% in English Language Arts 30-2
 - o 50% in ESLG 1860
 - o 60% in ESLG 1898
- ELP Requirements¹
 - o Band F - see pages 37-38 for details.

Missing requirements? The Open Admissions Pathways provides an alternative way for you to start your studies quickly and enter your program. Learn more at norquest.ca/pathway

Practicum/work experience requirements may apply. See program website for complete details.²

JUSTICE

norquest.ca/justice
CREDENTIAL: Diploma

Learn about Alberta laws and policies and the many socio-economic factors that influence crime. The program includes Indigenous-focused resources to promote understanding about Indigenous Peoples' complex relationship with Canada's justice system.

Explore a broad range of important skills including crisis intervention skills, health and wellness initiatives, and strategies for working with diverse groups of Canadians.

Focus on a specific area of interest, including youth work, corrections theory and practice, and law enforcement, Indigenous justice, advocacy, and many others.

CAREER POTENTIAL

Graduates will be prepared to work collaboratively with other justice professionals and to pursue positions such as police officer, probation officer, case worker, Indigenous peace officer, court clerk, sheriff, youth worker, corrections officer, victim services advocate, park warden, fish and wildlife peace officer, border security officer, sentence administrator, and more.

ADMISSION REQUIREMENTS

- Language Arts (one of or equivalent)
 - o 60% in English Language Arts 30-1
 - o 70% in English Language Arts 30-2
 - o 60% in ESLG 1860
 - o 70% in ESLG 1898
- ELP Requirements¹
 - o Band F - see pages 37-38 for details.

Missing requirements? The Open Admissions Pathways provides an alternative way for you to start your studies quickly and enter your program. Learn more at norquest.ca/pathway

Practicum/work experience requirements may apply. See program website for complete details.²

MENTAL HEALTH RECOVERY PRACTITIONER

norquest.ca/mhrp
CREDENTIAL: Post-Diploma Certificate

This post-diploma certificate provides health and human services professionals with the knowledge and skills to work with clients experiencing mental health and concurrent disorders.

CAREER POTENTIAL

Graduates may enter the mental health field or pursue further education at the bachelor's and master's levels in areas such as social work, addictions, mental health, program administration, management, and research. Graduates may receive credit toward the Addictions Recovery Practitioner program.

ADMISSION REQUIREMENTS

- Post-secondary diploma or degree in health, human services, or social sciences; or active licensure in Canada with a health or human services governing body
- ELP Requirements¹
 - o Band F - see pages 37-38 for details.

SETTLEMENT STUDIES

norquest.ca/ss
CREDENTIAL: Diploma

Begin a rewarding career that supports newcomers to settle and integrate into their new communities. In this diploma program, the first of its kind in western Canada, you will develop the skills and competencies needed to work effectively with newcomers to Canada. You will examine the foundational and current practices of settlement work in Canada and develop strategies to empower, support, and advocate for clients.

Graduates from NorQuest's Community Support Worker program are eligible to transfer directly into year two of this program.

CAREER POTENTIAL

Graduates may pursue employment within the non-profit and settlement sectors, various departments and levels of government, or agencies that have partnerships with schools and public libraries.

ADMISSION REQUIREMENTS

- Language Arts (one of or equivalent)
 - o 60% in English Language Arts 30-1
 - o 60% in English Language Arts 30-2
 - o 60% in ESLG 1860
 - o 60% in ESLG 1898
- ELP Requirements¹
 - o Band F - see pages 37-38 for details.

Practicum/work experience requirements may apply. See program website for complete details.²



HEALTH

SOCIAL WORK

norquest.ca/sw
CREDENTIAL: Diploma

NorQuest's Social Work diploma program has a unique multicultural focus to best prepare you to help your clients. In addition to learning the foundations of social work, this program emphasizes the value of human diversity and teaches the practice of social work within a supportive and empowering environment.

CAREER POTENTIAL

Graduates are employed in government and non-government settings in areas such as child and youth protection, addictions counselling, family support, and other related fields.

ADMISSION REQUIREMENTS

- Language Arts (one of or equivalent)
 - 60% in English Language Arts 30-1
 - 60% in ESLG 1860
- Documentary evidence (i.e., a form completed by the agency involved) of having completed at least 100 voluntary and/or paid work hours in the human services field within the last five years of the start date of your program with one organization. We do not offer conditional admissions for the volunteer/work requirement so you must complete the 100 hours before you receive an offer of admission. See program web page for more details.
- ELP Requirements¹
 - Band F - see pages 37-38 for details.

Practicum/work experience requirements may apply. See program website for complete details.²

ADVANCED EDUCATION IN ORTHOPAEDICS FOR LPNs

norquest.ca/ortho
CREDENTIAL: Post-Diploma Certificate

This post-diploma program prepares licensed practical nurses (LPNs) with the knowledge and skills for a specialized career in orthopaedics. It consists of three courses and a 300-hour practicum. Further your understanding of anatomy and physiology in relation to orthopaedics and orthopaedic radiology, assessment, and trauma.

CAREER POTENTIAL

Graduates are prepared to work in emergency departments, cast rooms, and orthopaedic patient care areas.

ADMISSION REQUIREMENTS

- Active registration in good standing with a college for LPNs
- Active employment in an acute care site for a minimum of 3,600 hours, confirmed by a letter from current employer. Acute care sites include medicine, surgery, intensive care, cardiac care, pediatrics, emergency departments, operating rooms, or out-patient cast rooms

Additional clinical practical requirements may apply. See program website for complete details.

ADVANCED FOOT CARE

norquest.ca/afc
OUTCOME: Course completion

Through a combination of independent study, assignments, instructor-led theory, and clinical practice, students will learn assessment and treatment of ailments of the foot as well as how to care for the feet of high-risk clients. The course material also covers standards for sterilization protocols and accepted procedures for foot care nurses, records management, interdisciplinary care, and business fundamentals. All supplies and instruments are included.

CAREER POTENTIAL

Graduates will be able to provide foot care in both private practice and in a health-care setting.

ADMISSION REQUIREMENTS

- Active licensure in Canada as a licensed practice nurse, registered nurse, or nurse practitioner, and license in good standing

Practicum/work experience requirements may apply. See program website for complete details.²

HEALTH CARE AIDE

norquest.ca/hca
CREDENTIAL: Certificate

NorQuest's Health Care Aide program is among the largest in Canada and prepares you to be a part of a health-care team in a variety of different settings, providing frontline care to clients in need of assistance.

CAREER POTENTIAL

Graduates find work in continuing care institutions, home care agencies, group homes, assisted or supportive living, day programs, specialized care centres and programs, acute care hospitals, and private care.

ADMISSION REQUIREMENTS

- English Language Arts (one of or equivalent)
 - 60% in English Language Arts 20-2
 - 55% in English Language Arts 30-2
- OR
- Completion of Accuplacer exam
- ELP Requirements¹
 - Band E - see pages 37-38 for details.

Practicum/work experience requirements may apply. See program website for complete details.²

"I chose NorQuest because of the diverse student population and its Social Work diploma program is multicultural focused."

- Jirehl, Social Work

"I had great instructors during my time at NorQuest. Very experienced, thorough, patient, and understanding. They were nurses who inspired us all, and always instilled in us that we're going to be great health care aides. I didn't know who I truly was until I got here."

- Shandella, Health Care Aide



HEALTH CARE LEADERSHIP

norquest.ca/hcl

CREDENTIAL: Post-Diploma Certificate

Learn theoretical knowledge and skills assessment related to leadership and management with a focus on leadership development, cultural sensitivity, communication, organizational behavior, principles of adult education, business fundamentals, strategic planning, and inter-professional collaboration. Students will learn from experienced health care leaders and establish leadership competencies that will allow them to confidently apply for leadership roles within their chosen health profession or related fields.

CAREER POTENTIAL

Upon completion of the post-diploma certificate, individuals with a degree in health or allied health disciplines may be able to get positions such as team lead, coordinator, manager, supervisor, or educator. Graduates could pursue those roles in a variety of private and public settings including hospitals, continuing care centres, schools, community and government agencies, and private health-care facilities.

ADMISSION REQUIREMENTS

- Diploma or degree in a health-care field from an accredited institution
- ELP Requirements¹
 - o Band H - see pages 37-38 for details.

INTERDISCIPLINARY THERAPY ASSISTANT

norquest.ca/ita

CREDENTIAL: Diploma

Assist patients to overcome injuries or impairments as a valuable member of an interdisciplinary health-care team. You will develop a strong occupational and physical therapy assistant background and learn to incorporate essential assistant-level skills in speech language therapy and therapeutic recreation.

CAREER POTENTIAL

Graduates will meet industry demand for work in general therapy, rehabilitation, and discipline-specific occupational and physical therapy assistant positions in public and private health care, including clinics, hospitals, and continuing care centres.

ADMISSION REQUIREMENTS

- Language Arts (one of or equivalent)
 - o 60% in English Language Arts 30-1
 - o 70% in English Language Arts 30-2
 - o 60% in ESLG 1860
 - o 70% in ESLG 1898
- 50% in Mathematics 10C or equivalent
- 60% in Biology 30 or equivalent
- ELP Requirements¹
 - o Band F - see pages 37-38 for details.

Practicum/work experience requirements may apply. See program website for complete details.²

MEDICAL DEVICE REPROCESSING TECHNICIAN

norquest.ca/mdrt

CREDENTIAL: Certificate

Learn to perform the critical work of cleaning, disinfecting, sterilizing, packaging, and storing surgical and medical instruments to prevent and control the spread of infection. Upon graduation you will be prepared to write the Medical Device Reprocessing Technician certification exam through the Canadian Standards Association (CSA). NorQuest College is one of only a few CSA recognized training providers for medical device reprocessing training in Canada.

CAREER POTENTIAL

Graduates find work in medical device reprocessing departments of hospitals and other health facilities. This field is growing steadily with an increasing demand for well-trained technicians.

ADMISSION REQUIREMENTS

- Language Arts (one of or equivalent)
 - o 60% in English Language Arts 30-1
 - o 70% in English Language Arts 30-2
 - o 60% in ESLG 1860
 - o 70% in ESLG 1898
- ELP Requirements¹
 - o Band F - see pages 37-38 for details.

Practicum/work experience requirements may apply. See program website for complete details.²

PHARMACY TECHNICIAN

norquest.ca/pt

CREDENTIAL: Diploma

In NorQuest's nationally accredited diploma program, you will acquire the knowledge and skills needed to work in this fast-paced and highly respected occupation. This includes dispensing prescriptions, compounding medications, preparing sterile products, and providing patient care.

CAREER POTENTIAL

Pharmacy technicians work for hospitals, community pharmacies, pharmaceutical companies, and insurance companies.

ADMISSION REQUIREMENTS

- Language Arts (one of or equivalent)
 - o 60% in English Language Arts 30-1
 - o 70% in English Language Arts 30-2
 - o 60% in ESLG 1860
 - o 70% in ESLG 1898
- Mathematics (one of or equivalent)
 - o 60% in Mathematics 30-1
 - o 60% in Mathematics 30-2
- 60% in Biology 30 or equivalent
- 60% in Chemistry 30 or equivalent
- High school diploma, GED, or equivalent
- Successful completion of NorQuest College Pharmacy Technician diploma arithmetic assessment

CONTINUED ON NEXT PAGE...



PRACTICAL NURSE

norquest.ca/practical-nurse
CREDENTIAL: Diploma

One of the largest in Canada, NorQuest's Practical Nurse program will prepare you to play a vital, frontline role in providing high-quality care to clients in a variety of health-care settings.

CAREER POTENTIAL

Licensed practical nurses are employed in acute care hospitals, continuing care centres, community care settings, client homes, clinics, and doctors' offices.

ADMISSION REQUIREMENTS

- Language Arts (one of or equivalent)
 - o 60% in English Language Arts 30-1
 - o 70% in English Language Arts 30-2
 - o 60% in ESLG 1860
 - o 70% in ESLG 1898
- Mathematics (one of or equivalent)
 - o 60% in Mathematics 20-1
 - o 70% in Mathematics 20-2
 - o 50% in Mathematics 30-1
 - o 60% in Mathematics 30-2
 - o 60% in MATH 1524
- 60% in Biology 30 or equivalent
- ELP Requirements¹
 - o Band H - see pages 37-38 for details.

Practicum/work experience requirements may apply. See program website for complete details.²

PRACTICAL NURSE DIPLOMA FOR INTERNATIONALLY EDUCATED NURSES

norquest.ca/pndien
CREDENTIAL: Diploma

This two-year diploma program is designed to train internationally educated nurses to achieve academic and professional success. Language training instructors and practical nurse instructors will help you acquire the nursing knowledge, clinical judgement, and communication skills needed to become a practical nurse in Canada. Collaborative classes, labs, workshops, and innovative learning strategies are designed to target specific student needs to prepare you for practicum, writing the Canadian Practical Nurse Registration Exam, and future career success.

CAREER POTENTIAL

Graduates can pursue a career in a variety of health-care settings, including, but not limited to acute care hospitals, continuing care centres, community care settings, client homes, clinics, or doctors' offices.

ADMISSION REQUIREMENTS

- Diploma or degree in a health care field from an accredited institution outside of Canada
- ELP Requirements¹
 - o Band H – see pages 37-38 for details.

Practicum/work experience requirements may apply. See program website for complete details.²

THERAPEUTIC RECREATION

norquest.ca/tr
CREDENTIAL: Diploma

Learn how to enhance your clients' quality of life through leisure activities. Gain knowledge and skills to plan, implement, and evaluate individual and group therapeutic recreation and social activities, and explore the concepts, theory, and practical experiences related to leadership and critical thinking.

This program allows students to meet the requirements for supporting membership status with the Alberta Therapeutic Recreation Association (ATRA). Effective April 1, 2021, ATRA will require new applicants for professional membership to have a degree in therapeutic recreation or recreation/leisure studies.

CAREER POTENTIAL

Graduates are qualified to work in continuing care, assisted living, hospitals, lodges, and mental and day program settings.

ADMISSION REQUIREMENTS

- Language Arts (one of or equivalent)
 - o 50% in English Language Arts 30-1
 - o 70% in English Language Arts 30-2
 - o 50% in ESLG 1860
 - o 70% in ESLG 1898
- 50% in Biology 30 or equivalent
- ELP Requirements¹
 - o Band F - see pages 37-38 for details.

Practicum/work experience requirements may apply. See program website for complete details.²

CONTINUED FROM PREVIOUS PAGE:

- ELP Requirements¹
 - o Band G - see page 37-38 for details; or
 - o Graduation from approved Canadian high school, with at least three consecutive years of full-time academic study and satisfactory completion of Grade 12 English or its equivalent. The high school's language of instruction must be English. A GED is not acceptable;

OR

- o Successful completion of a recognized Canadian undergraduate degree program at a post-secondary institution where the language of instruction is English

NOTE: Language proficiency standards are established by the Alberta College of Pharmacists and NAPRA. No other evidence of ELP will be accepted.

Practicum/work experience requirements may apply. See program website for complete details.²

“NorQuest’s instructors helped me gain confidence in myself. I knew I had made the right choice of school and program.” - Hailey, Therapeutic Recreation





ACADEMIC UPGRADING

ACADEMIC UPGRADING

norquest.ca/au
CREDENTIAL: Course credits

NorQuest College operates as an accredited high school, offers courses that follow the Alberta Education curriculum, and prepares you to continue your studies at NorQuest or another post-secondary institution. All courses are four months long. Free placement testing is available.

ADMISSION REQUIREMENTS

- Alberta Education high school transcript current within the last five years or NorQuest College placement assessment
- ELP Requirements¹
 - Band C - see pages 37-38 for details.

FOUNDATIONS FOR LEARNING

norquest.ca/ffl
CREDENTIAL: Course credits

Delivered in partnership with Community Adult Learning Programs (CALPs) throughout our region, Foundations for Learning includes a range of 12-week online courses that allow you to strengthen your academic skills in your home community.

Take courses online with in-person support at your local CALP.

ADMISSION REQUIREMENTS

- Recommended that applicants take a NorQuest College placement assessment to determine the appropriate levels of study
- ELP Requirements¹
 - Band C - see pages 37-38 for details.

EMPLOYMENT PREPARATION

APPRENTICESHIP PREP

norquest.ca/trades
CREDENTIAL: Certificate

Develop the knowledge and skills you need to prepare for the trade entrance exam and entry into any one of 45 designated trades. The focus of the program is on upgrading, practical trades training, and facilitated work experience.

ADMISSION REQUIREMENTS

- Grade 8 English Language Arts and Mathematics or equivalent
- ELP Requirements¹
 - Band C - pages 37-38 for details.

DAY HOME PROVIDER

norquest.ca/dhp
CREDENTIAL: Certificate

This program focuses on both academic and occupational skills through the content of early childhood training. Learn programming, job presentation skills, and how to run a home-based day home business.

This program is designed for English language learners.

CAREER POTENTIAL

This certificate will prepare you to become a self-employed day home provider or work in a child-care centre. After successfully completing this program, you can apply for Level 1 Early Childhood Educator certification through the Government of Alberta, Human Services.

ADMISSION REQUIREMENTS

- Grade 5 or equivalent in reading and writing
- ELP Requirements¹
 - Band B - pages 37-38 for details.



ENGLISH LANGUAGE TRAINING

TRANSITIONS TO EMPLOYMENT

norquest.ca/tte
CREDENTIAL: Certificate

This program is designed to provide employment preparation training for adults with mild cognitive developmental disabilities.

Through a combination of classroom and workplace instruction, students will acquire training on current equipment, an understanding of current workplace practices, and increased self-confidence while receiving ongoing, intensive support and mentoring from staff.

CAREER POTENTIAL

Graduates may find jobs in a variety of fields, including food service, warehousing, and other service industries.

ADMISSION REQUIREMENTS

- History of special education (school records, standardized testing, etc.)
- Admission interview with a NorQuest College counsellor
- Ability to participate in a group setting
- Ability to function independently in class and at the work site
- Readiness for employment

ESL INTENSIVE

norquest.ca/esl
CREDENTIAL: Course credits

Our ESL Intensive Program offers full-time and part-time studies to help you achieve your goals. Classes range from CLB 4 to CLB 8 and help you to advance your digital literacy skills, gain experience studying online, and prepare for further education or employment. We also offer English for Academic Purposes courses to help you meet your specific academic goals.

CAREER POTENTIAL

English skills are vital for success and promotion in any job or career in Canada. NorQuest's ESL Intensive program helps you become qualified for the workplace. Community service learning activities are available to help you make contributions to the community and gain work-related skills while studying.

ADMISSION REQUIREMENTS

- NorQuest College language placement assessment to determine course level
 - Standardized tests (CLBPT, CLBA, IELTS, TOEFL, and CELPIP) may be considered
 - Language proficiency assessment must be less than six months old at the time of application for placement in courses
 - A minimum CLB or IELTS level of 4 is required for placement into courses

LANGUAGE INSTRUCTION FOR NEWCOMERS TO CANADA (LINC)

norquest.ca/linc
CREDENTIAL: Course credits

Are you new to Canada? NorQuest College supports your settlement in Alberta and Canada and offers full-time and part-time language training courses and numerous settlement services that will help you develop basic English language proficiency, settlement knowledge, and essential skills. Included in the program are community service learning activities and other work-integrated learning opportunities to help you make meaningful contributions to the community while helping you prepare for further education or gain career-related skills.

Classes range from basic literacy to CLB 8 and include specialized courses such as Digital Literacy or Websafe and several employment preparation and skill building options.

CAREER POTENTIAL

Students who complete the program will have the basic language skills and settlement knowledge they need to better integrate into the Canadian community and pursue further education or career options.

Note: There are no tuition and fees for eligible students. Tuition is funded by Immigration, Refugees, and Citizenship Canada.

ADMISSION REQUIREMENTS

- A permanent resident
- CLB assessment

TEACHING ENGLISH AS A SECOND LANGUAGE

norquest.ca/tesl
CREDENTIAL: Completion certificate

Recognized by TESL Canada at Standard 1, this 120-hour certificate program provides you with key principles of second language teaching and the skills, strategies, and tools to help you succeed in teaching English language learners.

Learn new theoretical and practical trends in the field and participate in a practicum to gain classroom application experience and solidify your teaching skills.

COURSES:

- Theory of Teaching and Learning
- Linguistics
- Communication Skills
- Teaching in Specific Contexts
- Reflecting on Teaching and Learning
- Practicum

ADMISSION REQUIREMENTS

- High School Diploma
- ELP Requirements¹
 - Band F - see pages 37-38 for details.



CONTINUING EDUCATION

SUPPLY CHAIN

norquest.ca/scpcp

OUTCOME: Professional certificate

Supply chain management is an increasingly important career as consumers have come to expect goods and services faster, with more convenience, and from anywhere in the world. From logistics and procurement to transportation and bidding and contract management, this one-year program will prepare you for work across the supply chain industry.

CAREER POTENTIAL

Work toward a Supply Chain Management Professional designation from Supply Chain Canada, and explore a career in purchasing, logistics, operations, supply chain, and many others.

ADMISSION REQUIREMENTS

- Previous diploma or degree
- ELP Requirements¹
 - o Band varies - see program website for details.

BUSINESS ANALYSIS

norquest.ca/bapcp

OUTCOME: Professional certificate

Business Analysis professionals play a vital role in helping organizations create efficiencies, update processes, and modernize workflows to meet the challenges of today. This one-year program will prepare you for work as a business analyst by providing the knowledge, skills, and work experience to add value to any organization. You will gain the skills needed to approach and analyze a business problem, design a solution, plan for implementation, and measure the improvements.

CAREER POTENTIAL

Work toward an entry certificate in business analysis from the International Institute of Business Analysis to become a business analyst.

ADMISSION REQUIREMENTS

- Previous diploma or degree
- ELP Requirements¹
 - o Band varies - see program website for details.

FOOD AND BEVERAGE MANAGEMENT

norquest.ca/fbm

OUTCOME: Professional certificate

This one-year professional certificate program will prepare you to become a leader in the food and beverage industry. Unlike other programs that focus on apprenticeship chef training or general hospitality training, NorQuest's Food and Beverage Management was created specifically for learners who want to advance their culinary skills and explore leadership roles. Learners will be ready to manage existing establishments or launch a business.

CAREER POTENTIAL

Gain the skills to become a manager, supervisor, or business owner. You will be prepared for leadership roles in the food and beverage industry, including restaurants, catering companies, event venues, and more.

ADMISSION REQUIREMENTS

- Previous diploma or degree
- ELP Requirements¹
 - o Band varies - see program website for details.

FLIGHT ATTENDANT

norquest.ca/flight

OUTCOME: Completion certificate

Prepare for an exciting aviation career. From medical incidents to in-flight emergencies and procedures, our experienced instructors will give you the tools and knowledge you need to start your career as a flight attendant. You will also earn an Aviation Food Safety, WHMIS, and First Aid Certificate.

CAREER POTENTIAL

Upon successful completion, you can work for a major airline in the corporate or private sectors as a flight attendant or explore other opportunities such as baggage handler, ground crew, gate attendant, and much more.



INSURANCE PROFESSIONAL

norquest.ca/insurance

OUTCOME: Completion Certificate

Created in partnership with Alberta-based insurance firms, NorQuest's Insurance Professional program prepares students with fundamental knowledge, business training, and other essential skills necessary to succeed in the insurance industry. Gain an education and certificate of completion that's recognized by many of Alberta's insurance firms.

As an online, evening program with a flexible schedule, you can complete your courses while you continue working.

NorQuest's program is shorter than other post-secondary offerings and provides the skills for you to start immediately in the industry.

CAREER POTENTIAL

Insurance Professionals often report strong starting salaries, flexible work styles—with many working from home or in hybrid environments—good benefits, and funding for professional development and continuous learning. As a large industry, there are many different roles and disciplines you can branch into as you continue to develop your professional career.

There are many positions to consider once you are equipped with this education:

- Account assistant
- Account manager assistant
- Broking assistant
- Commercial insurance broker
- Entry level insurance broker
- Entry level personal insurance advisor
- Personal insurance broker
- Technical risk assistant
- Underwriting assistant

MANAGERIAL EXCELLENCE

norquest.ca/managerialexcellence

OUTCOME: One microcredential with three digital badges

Taught by experienced professionals, you will learn the skills and frameworks that businesses are using today. Not only will you develop a new understanding of leadership, you will also gain experience applying your knowledge in the community. Combining experiential learning and community-based projects, we offer you a mix of unconventional education and an environment full of diverse thinkers, connections to local business professionals, and opportunities to gain hands-on management experience.

This flexible program consists of three badges:

Managerial Leadership: understand emotional intelligence and discover leadership style

Inspiring Teams: coach and lead others to create an engaged workplace

Organizational Management: make tactical and strategic decisions

CAREER POTENTIAL

Upon completion of your 12-week learning experience, you will earn a microcredential to boost your LinkedIn profile and help you stand out in the job market. Further, you will develop leadership strategies and action plans to help leverage your role in your organization.



ENGLISH LANGUAGE PROFICIENCY

English Language Proficiency (ELP) test results must have been obtained within two years of the start date of your program.

*Not accepted for Health Care Aide

**For specific details about ELP requirements for this program, see the Pharmacy Technician program requirements

Note: Some programs' ELP requirements are not listed on this chart. Visit each program page on the website for details.

BAND	PROGRAM	TEST	SCORE				
F	<ul style="list-style-type: none"> Addictions Recovery Practitioner Arts and Sciences Autism Spectrum Disorder Studies Behaviour and Regulation Studies Child and Youth Care Community Support Worker Dental Office Assistant Disability Studies Early Learning and Child Care Educational Assistant Energy Management Environmental Technician Hospital Unit Clerk Indigenous Studies Interdisciplinary Therapy Assistant Justice Machine Learning Analyst Medical Device Reprocessing Technician Medical Office Assistant Mental Health Recovery Practitioner Settlement Studies Social Work Teaching English as a Second Language Therapeutic Recreation Veterinary Office Assistant 	<ul style="list-style-type: none"> IELTS Academic TOEFL iBT Cambridge English CAEL PTE Academic Duolingo NorQuest Coursework 	<ul style="list-style-type: none"> 6.5, no section score below 6.0 84, no section score below 21 180, no section score below 165 70, no section score below 70 59, no section score below 56 115 Minimum 80% in ESLS 8000 or 8100, and 80% in ESLW 8000 or 8100; or 50% in ESLG 1860 and 1861, or 50% in ESLG 1898 and 1899 				
				B	<ul style="list-style-type: none"> Day Home Provider 	<ul style="list-style-type: none"> CLBA or CLBPT IELTS Academic TOEFL iBT CELPiP General Duolingo NorQuest Coursework 	<ul style="list-style-type: none"> No section score below 4 4.0 32 4 75 Minimum 80% in ESLS 4000 or 4100, and 80% in ESLW 4000 or 4100
				C	<ul style="list-style-type: none"> Academic Upgrading Apprenticeship Prep Foundations for Learning 	<ul style="list-style-type: none"> CLBA IELTS Academic TOEFL iBT CELPiP General Duolingo NorQuest Coursework 	<ul style="list-style-type: none"> No section score below 5, 6 for Apprenticeship Prep 5.0 40 5 85 Minimum 80% in ESLS 5000 or 5100, and 80% in ESLW 5000 or 5100
G	<ul style="list-style-type: none"> Pharmacy Technician** 	<ul style="list-style-type: none"> IELTS Academic TOEFL iBT MELAB 	<ul style="list-style-type: none"> 6.5, no section score below 6.0 91, no score below: 21 listening, 23 speaking, 22 reading, 25 writing 81, no score below: 80 listening, 3+ speaking, 83 reading, 80 writing 				
				E	<ul style="list-style-type: none"> Accounting Technician Administrative Professional Business Administration Health Care Aide 	<ul style="list-style-type: none"> IELTS Academic TOEFL iBT Cambridge English* CAEL* PTE Academic* Duolingo NorQuest Coursework* 	<ul style="list-style-type: none"> 6, no section score below 5.5 71 170-179 60 54 105 (Health Care Aide accepts 95) Minimum 80% in ESLS 7000 or 7100, and 80% in ESLW 7000 or 7100
H	<ul style="list-style-type: none"> Health Care Leadership Practical Nurse Practical Nurse Diploma for Internationally Educated Nurses 	<ul style="list-style-type: none"> IELTS Academic TOEFL iBT CELBAN NorQuest Coursework 	<ul style="list-style-type: none"> No score below: 7.5 listening, 7 speaking, 6.5 reading, 7 writing 94 No score below: 10 listening, 8 speaking, 8 reading, 7 writing Minimum 50% in ESLG 1860 and 1861 				



FUNDING YOUR EDUCATION

NorQuest empowers students to make the best financial decisions for their education.

Funding your education

Through awards, bursaries, and student advising, NorQuest helps remove financial barriers so students can start their educational journey with less stress and more confidence.

Student financial advising

NorQuest's Student Financial Advisors are available to provide one-on-one support. The advisors can review application forms, offer insights into maximizing funding, and provide valuable information on loan repayments. Once a learner applies for their program of choice, they can reach out to a Student Financial Advisor at student.advisor@norquest.ca.

Student loans and government grants

There are several funding and loan options available to students. Education is an investment of time and money, and government student loans and funding are designed to supplement students' resources and help them reach their goals.

Learn more about ways to pay for your education at norquest.ca/funding

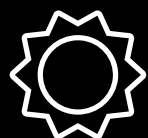
2022-2023 ACADEMIC YEAR



TOTAL FUNDS DISTRIBUTED
\$937,392



NUMBER OF STUDENTS THAT RECEIVED A BURSARY OR SCHOLARSHIP
1,737



NUMBER OF SHINE AWARDS RECIPIENTS
47



NUMBER OF 1000WOMEN4STEM RECIPIENTS
29

HOW TO APPLY

Applying to post-secondary is a big step, and we want you to feel supported and empowered.

BEFORE YOU APPLY

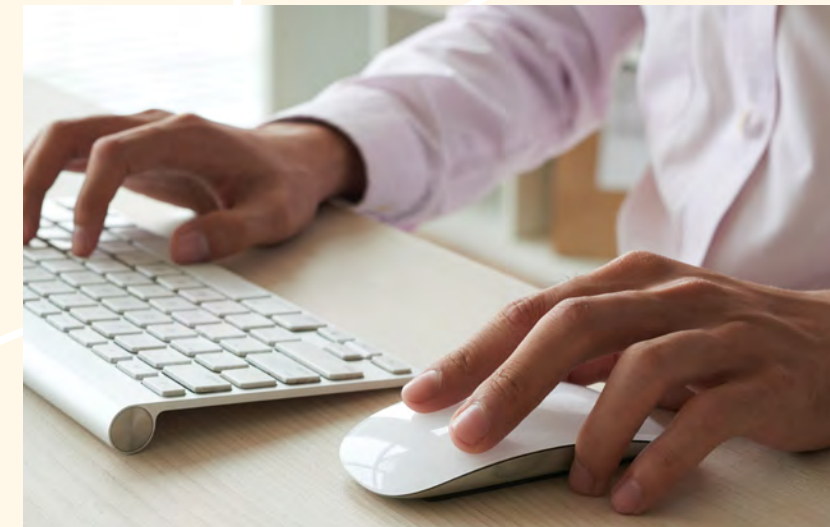
Contact a Student Recruiter at student.recruiters@norquest.ca if you need help understanding the admission requirements or determining which program is the perfect fit for you.

AFTER YOU APPLY

Contact a Student Advisor at student.advisor@norquest.ca if you need help planning out your academic schedule, determining your goals, or applying for funding.

The Process

- 1 APPLY THROUGH APPLYALBERTA.CA**
- 2 SEND IN TRANSCRIPTS AND OTHER REQUIRED DOCUMENTS**
- 3 ACCEPT YOUR OFFER!**



NORQUEST ALUMNI NETWORK

You will always have a place here. The moment you graduate from a program at NorQuest, you become part of the Alumni community. Get access to exclusive benefits, networking groups, and opportunities to stay connected with your classmates through events, volunteering, and more.

“Being a NorQuest alumni to me means being part of a lifelong family and sense of community.”

- Hayden Korethoski, Health Care Aide graduate

ALUMNI BENEFITS

- Preferred rates on home, auto, and life insurance through TD Insurance
- Exclusive discounts on TELUS internet, home phone, and Optik TV packages
- Discounted memberships at participating City of Edmonton recreation centres
- Ticket discounts for Broadway Across Canada
- 10% discounts at The Core
- Ongoing access to the Library’s physical collection
- Free career support for up to six months after graduation
- Immigration advising for up to one year after graduation

We’re always adding new, exciting benefits to our list. Visit norquest.ca/alumni to learn more.



ACADEMIC SCHEDULE

2024

Winter

Applications open **Feb 1, 2023**
Term begins/tuition due **Jan 8, 2024**
Term ends **Apr 26, 2024**

Spring

Applications open **June 1, 2023**
Term begins/tuition due **May 6, 2024**
Term ends **Aug 23, 2024**

Fall

Applications open **Oct 1, 2023**
Term begins/tuition due **Sep 3, 2024**
Term ends **Dec 20, 2024**

Dates may be subject to change.

2025

Winter

Applications open **Feb 1, 2024**
Term begins/tuition due **Jan 6, 2025**
Term ends **Apr 25, 2025**

Spring

Applications open **June 1, 2024**
Terms begins/tuition due **May 5, 2025**
Term ends **Aug 22, 2025**

Visit norquest.ca/academicschedule for details:



Open House

Saturday, **Oct 28, 2023**
Saturday, **Mar 16, 2024**
norquest.ca/openhouse

Contact Student Recruitment

780.644.5927
student.recruiters@norquest.ca
norquest.ca/recruiters

ELP requirements¹

All applicants must provide proof of English Language Proficiency (ELP) prior to admission. Visit norquest.ca/elp for details and a list of ways to meet ELP requirements. If you are meeting ELP requirements by taking a test, your results must be obtained within two years of the start of your program.

Practicum/work experience²

Many programs require documentation for non-academic requirements as condition of admission or to participate in practicum experiences. These may include Police Information Check, WHMIS, First Aid/CPR certification, current immunizations, coursework, co-op work permit (for international students), or others. Visit norquest.ca for more details.

Footnotes

Visit norquest.ca/tuition for tuition and fee details. Conditional or provisional admission may be granted to applications who are missing academic requirements after satisfying other conditions. See website for details.





NORQUEST COLLEGE